

Automated risk reduction solution

SureCam partners with Applied Driving to **advance existing telematics systems** through innovative technology and services.

Companion+ Telematics

Utilizing your existing system

SureCam customers already have access to enhanced dashcam technology and telematics data streams. However, finding the time and knowing the best way to **utilize this data to support drivers** can add unnecessary burdens to managers.

Applied Driving offers an **automated solution** through their online web-application Riskmapp, and product Companion+, to enhance organizational driver safety strategy and improve safe driving behavior through Triggered Training™ using event data from SureCam.



How does it work?



Driving events are detected



Behavioral event data and video footage is transmitted to Applied Driving



Companion+ automatically analyses the behavior data and driving trends

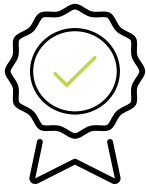


Triggered Training™ is then automatically sent to drivers, which could be in the form of a safety message, video or module.



As drivers get feedback and engage in any Triggered Training™, their behavior naturally improves.

Benefits to integrating with Companion+



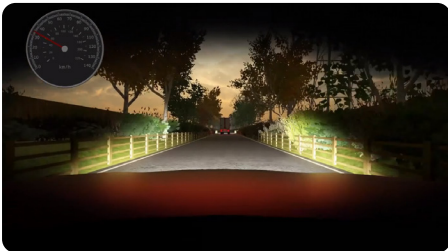
- ✓ Reduced incident rates
- ✓ Reduced insurance premiums
- ✓ Reduced cost of vehicle repairs
- ✓ No manager involvements
- ✓ Increased detection accuracy
- ✓ Reduced lost-time
- ✓ Reduced cost of vehicle-off-the-road
- ✓ Logistics and route optimization

Triggered Training™

Triggered Training™ safety messages, videos and modules are a supportive tool to enhance driver knowledge and re-enforce safer driving choices in the future.



- ✓ Over 40+ Modules available
- ✓ Multi-lingual
- ✓ Virtual Reality
- ✓ Bespoke Requests



Applied Driving also offer drivers and managers access to supplementary services including:

- ✓ Risk Assessments
- ✓ License Verifications
- ✓ Grey Fleet Management (UK Only)
- ✓ Manager Reporting and Insights
- ✓ Workshops & Online Training
- ✓ In-Vehicle Training



Interested? Contact your SureCam account manager to find out more information!