

# DRIVING IN FOG & LOW SUN

## Safety Bulletin

### Be prepared for journeys and take precautions while driving!

As summer ends, it's time to prepare for autumn driving conditions. This time of year not only transforms landscapes, but can bring challenging conditions for all drivers.



#### Safety precautions for foggy conditions

- ✓ Drive using dipped head lamps. Beware of other road users not using their lights, including cyclists.
- ✓ When visibility is seriously reduced of less than 100m, turn on your fog lamps and remember to switch them off when visibility has returned.
- ✓ Increase your space between vehicles in front and use caution if they move out of sight.
- ✓ Drive slowly, by doing so you can warn drivers behind in plenty of time.
- ✓ If conditions become dangerous, pull over in a safe location not blocking traffic, and be patient until conditions become safe to drive in.
- ✓ Keep a high vis jacket stored for each occupant in case you need to get out of the vehicle, you need to be visible!

#### Check the weather

Always check the weather forecast before road journeys!



#### Where fog occurs

Fog is most common by lakes, rivers and coastlines.



#### Road Conditions

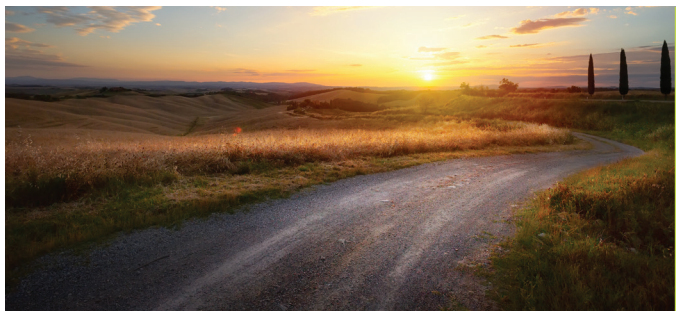
Be careful of roads and pavements, they may be slippery!



#### Did you know this fact about fog?

Fog can create the optical illusion of vehicles driving slowly. This can cause many drivers to speed up because they cannot accurately assess distance. Don't rely on your eyesight, always check the speedometer instead!





## What are the challenges of low sun?

Low sun often occurs in the early mornings and evenings. The glare from low sun can be dangerous for drivers as visibility can become reduced, and therefore create risky driving challenges.

## Our top tips for how to prepare when driving in low sun conditions!

### Slow down

If the low sun is effecting your ability to see clearly, slow down. Slow down as you approach hills, junctions or crossings.



### Keep sunglasses handy

Sometimes your sun visor doesn't help stop the low sun. Wear sunglasses for extra protection against sun glares.



### Use your lights

Driving with dipped head lamps on is good practice to be visible by others, but especially in low sun driving conditions.



### Dip your interior mirror

When the sun is beaming from the rear, it can often dazzle you through mirrors. Be prepared to dip your rear-view mirror.



### Windscreen & glass

Ensure all glass on your vehicle is clean inside and outside the vehicle. Dirt and smears can impact your vision while driving.



### Screen wash reservoir

Make sure your reservoir is topped up with good quality screen wash. When doing so, also check your wiper blades for any damage.



## Important rules from The Highway Code (UK only)

The Highway Code stipulates that if driving in adverse weather conditions you must, by law, be able to see out of every glass panel on your vehicle.

This is supported by the section 41D of the Road Traffic Act 1988, meaning it is a legal requirement to have a clear view of the road ahead before you set off.

Failure to do so could incur a fine, but more importantly could place your life, the lives of your passengers and the lives of those around you in danger.



## Our Services +

Applied Driving is a leading, global provider of driver safety and performance management solutions. Our dynamic approach analyzes the risks your drivers face and, in turn, gives us information on how to mitigate these risks through best-practice solutions. For detailed information on all our services please get in touch with our team by email or visit our website.

- Driver Risk Assessments
- Grey Fleet Management
- Fleet Safety Audit
- Licence Checking
- Global License Monitoring
- Driver Training



[www.applieddriving.co.uk](http://www.applieddriving.co.uk) | [info@applied-driving.com](mailto:info@applied-driving.com)

Applied Driving, 25 Barnes Wallis Road, Segensworth East, Fareham, Hampshire, PO15 5TT

Follow us on social

